




# Main Dashboard For Managerial Roles:Assistant Director



K SURYARAO

Assistant Director

Home

Notification 5

Notification 6

Data Inputs

^

Data Input AD

Work Status

✓

Work Process

✓

My Profile

Sign Out

Dashboard - Krishna

Welcome back, K SURYARAO!  
Last Login: Oct 19 2021 11:38AM

Mandals under ReSurvey

10/5418%

Villages under ReSurvey

10/10160.98%

Personnel Status

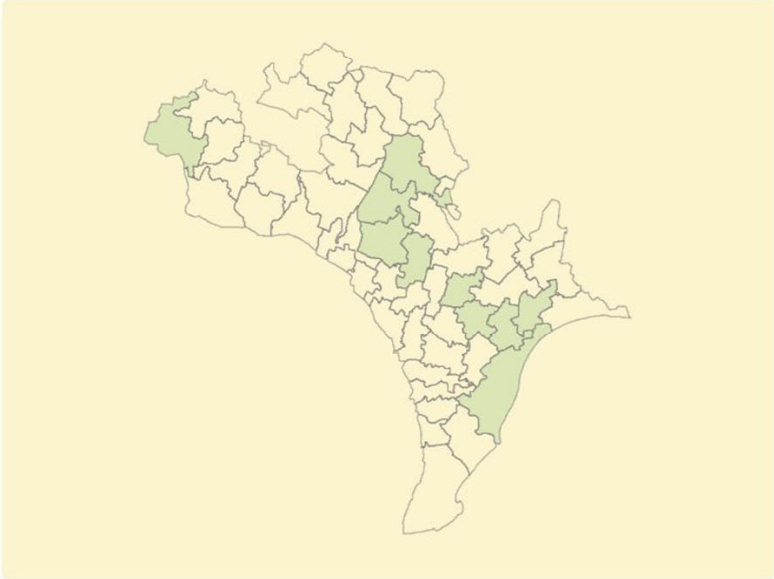
Role	User Total
Village Surveyor	1016
Surveyor	53
DIOS	4
IOS	2

Scheduling Status (Villages)

Started10/1016

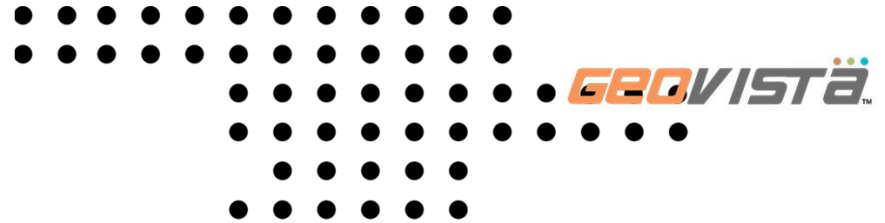
Delayed0/10

OnTime10/10

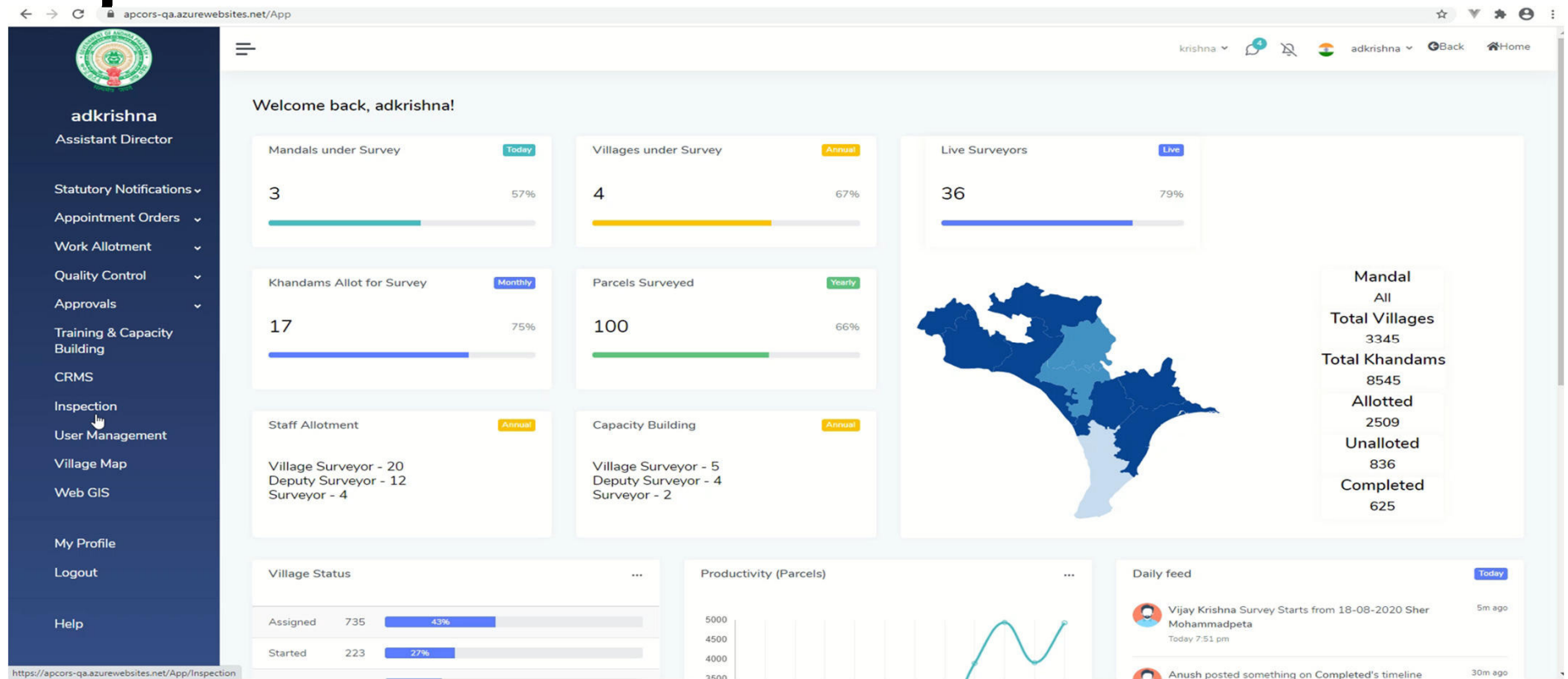


www.geovista.in

contact@geovista.in



# Inspection Parcel

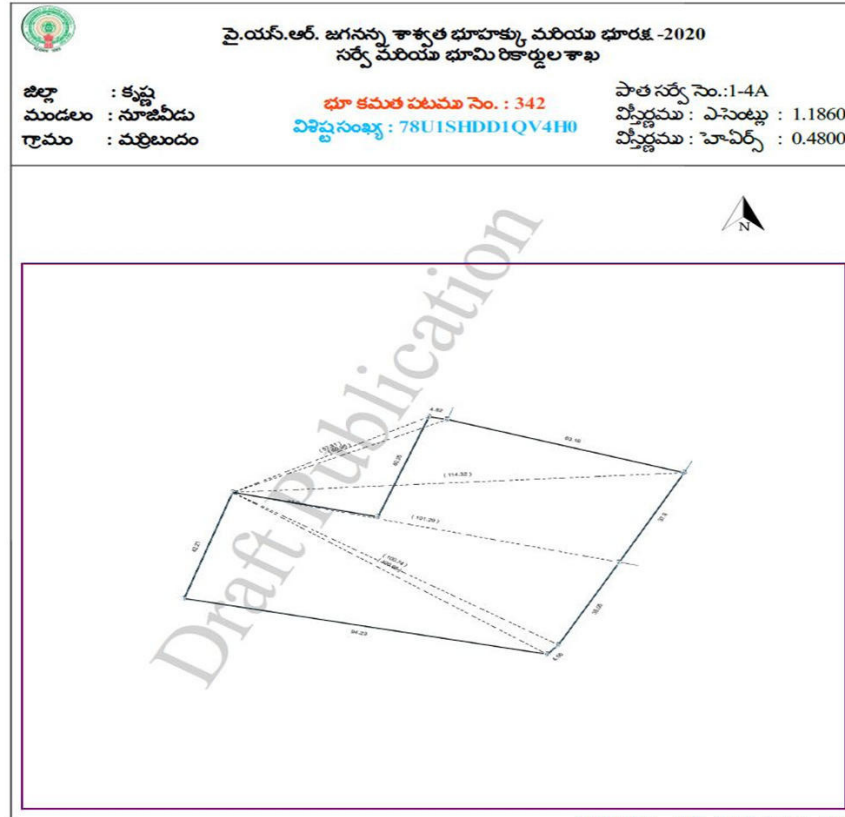


[www.geovista.in](http://www.geovista.in)

[contact@geovista.in](mailto:contact@geovista.in)



# Draft LPM



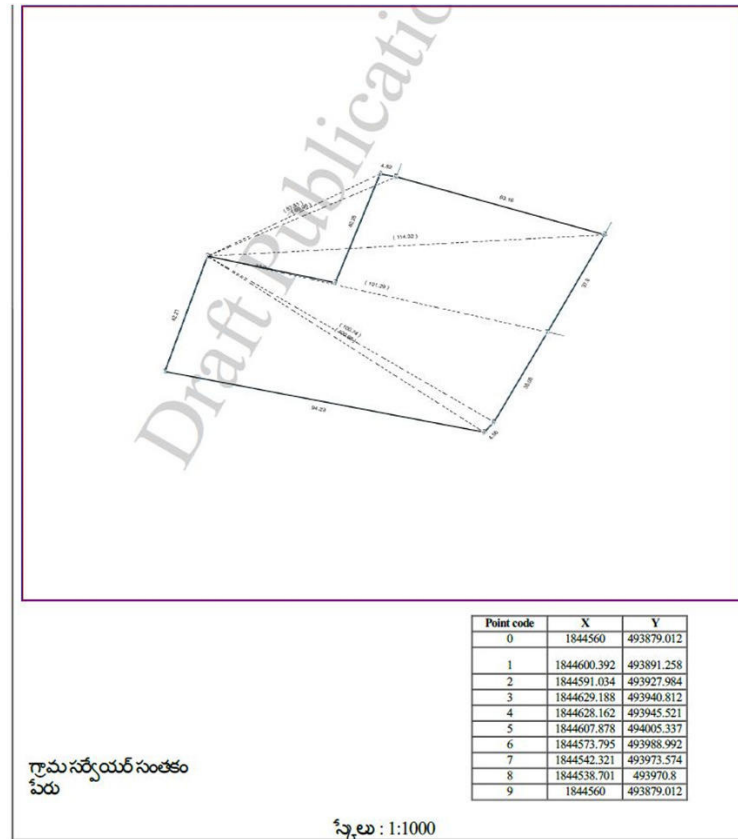
[www.geovista.in](http://www.geovista.in)

[contact@geovista.in](mailto:contact@geovista.in)



# Draft LPM contd..

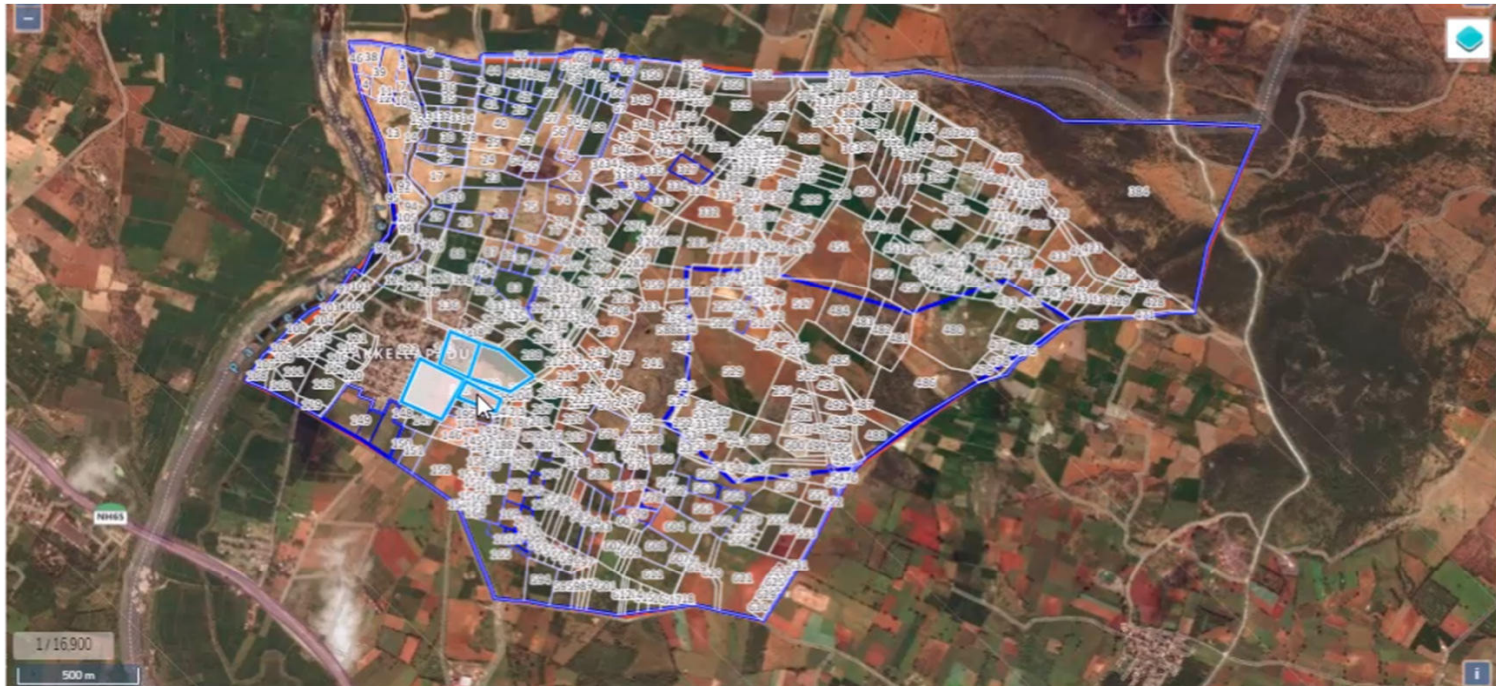
**GEOVISTA™**





# Villages: Village Map : All the Upload parcels of Village

- Statutory Notifications.
- Appointment Orders
- Work Allotment
- Village Map
- Inspection
- Objection
- Appeal
- User Management
- Reports
- My Profile
- Sign Out

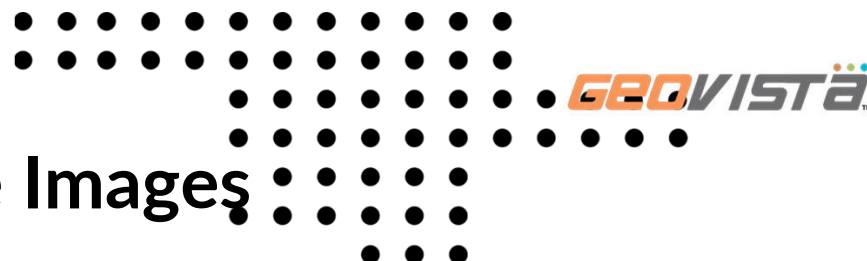


Parcel#	Extent	Status
143	9.294	New
	9.293	New

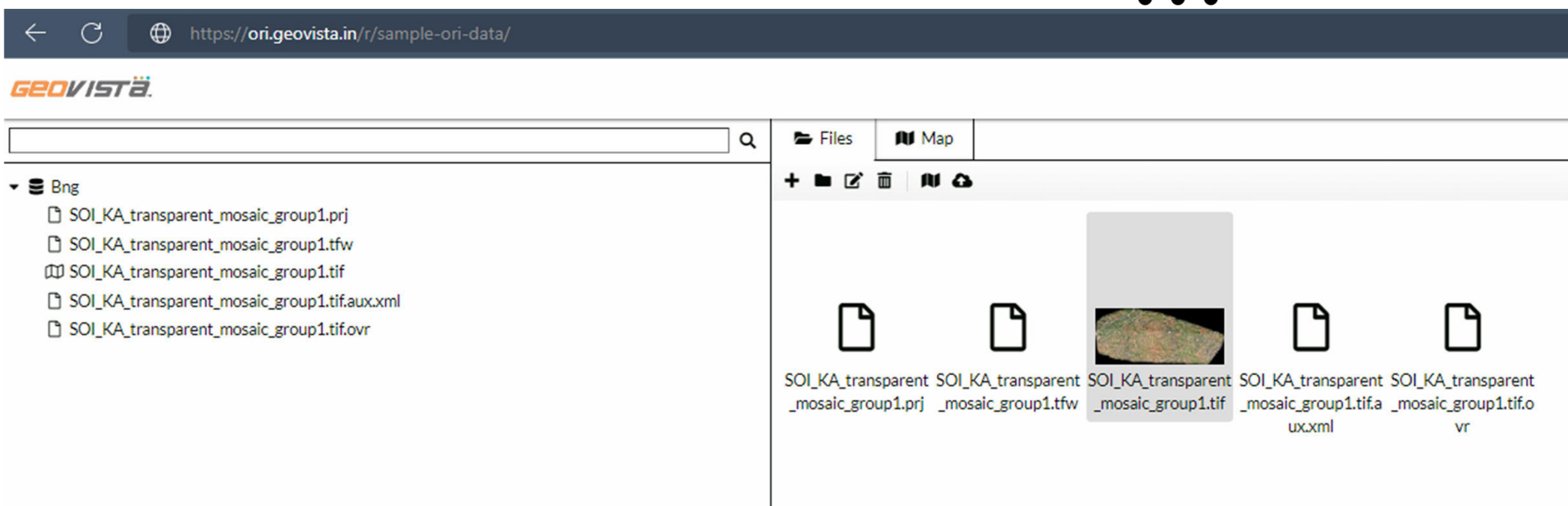
# HRSI//ORI Data Management

The application supports auto-tiling & WMTS server hosting for any HRSI/ORI data

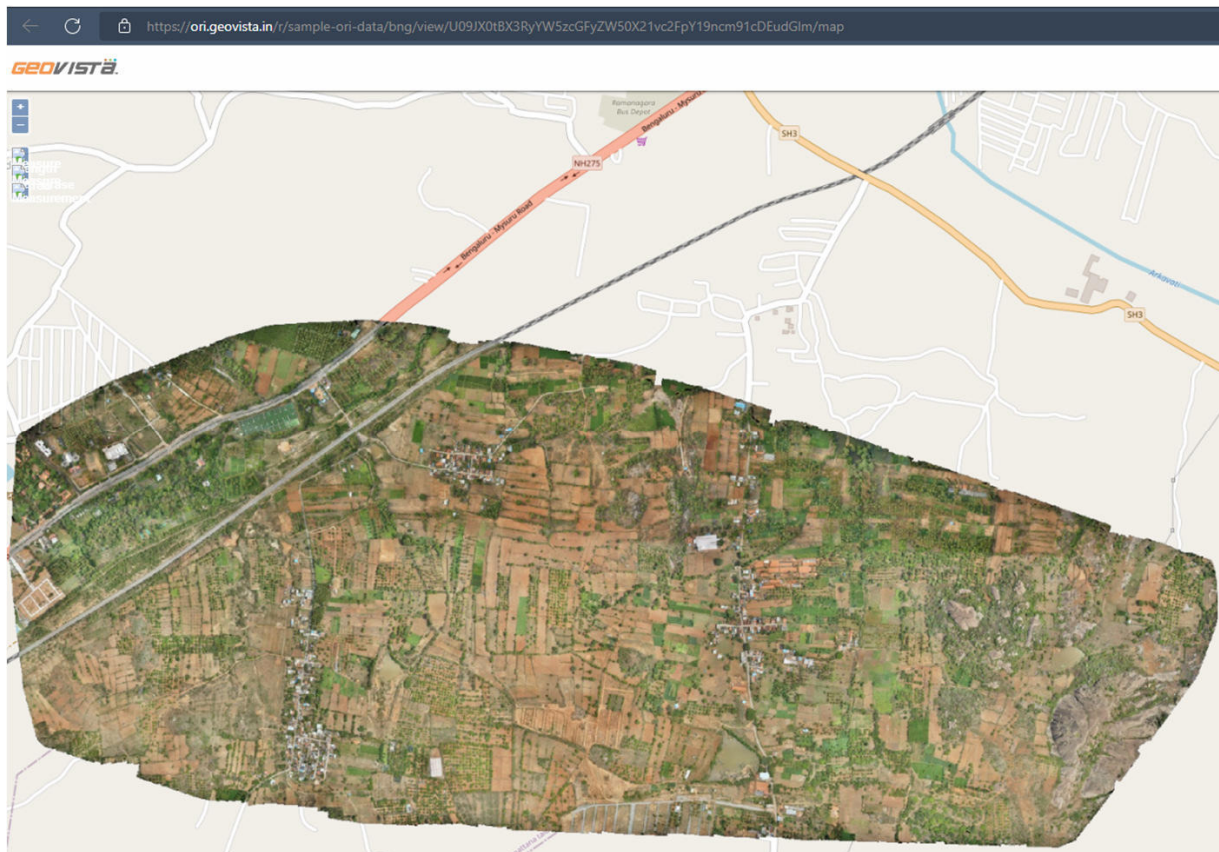
- Simple drag and drop ORI of any size
- Platform will automatically archive and create a Web-GIS viewer
- Will auto generate tiles for all zoom levels dynamically at scale
- Can support peta-byte scale data without losing performance, Also supports Aerial imagery
- Auto generate WMTS/WMS endpoints for each Village/ORI
- Can store all Drone project files such as raw jpegs, SHP data, GCP as well as final ORI
- ORI generation process from raw imagery can be integrated (WebODM)
- Customization to directly meet the needs of APSSLR Land Records project



# ORI Data Management – Sample Images



# ORI Data Management – Sample Images





# Main Dashboard For Managerial Roles: Assistant Director



**K SURYARAO**

Assistant Director

Home

Notification 5

Notification 6

Data Inputs

Data Input AD

Work Status

Work Process

My Profile

Sign Out



Krishna



KRI-AD

Back

Home

## Dashboard - Krishna

Welcome back, K SURYARAO!

Last Login: Oct 19 2021 11:38AM

### Mandals under ReSurvey

10/54

18%



### Villages under ReSurvey

10/1016

0.98%



### Personnel Status

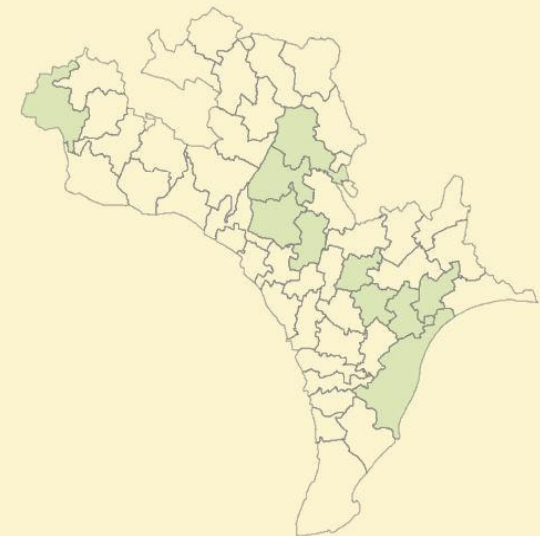
Role	User Total
Village Surveyor	1016
Surveyor	53
DIOS	4
IOS	2

### Scheduling Status (Villages)

Started 10/1016

Delayed 0/10

OnTime 10/10

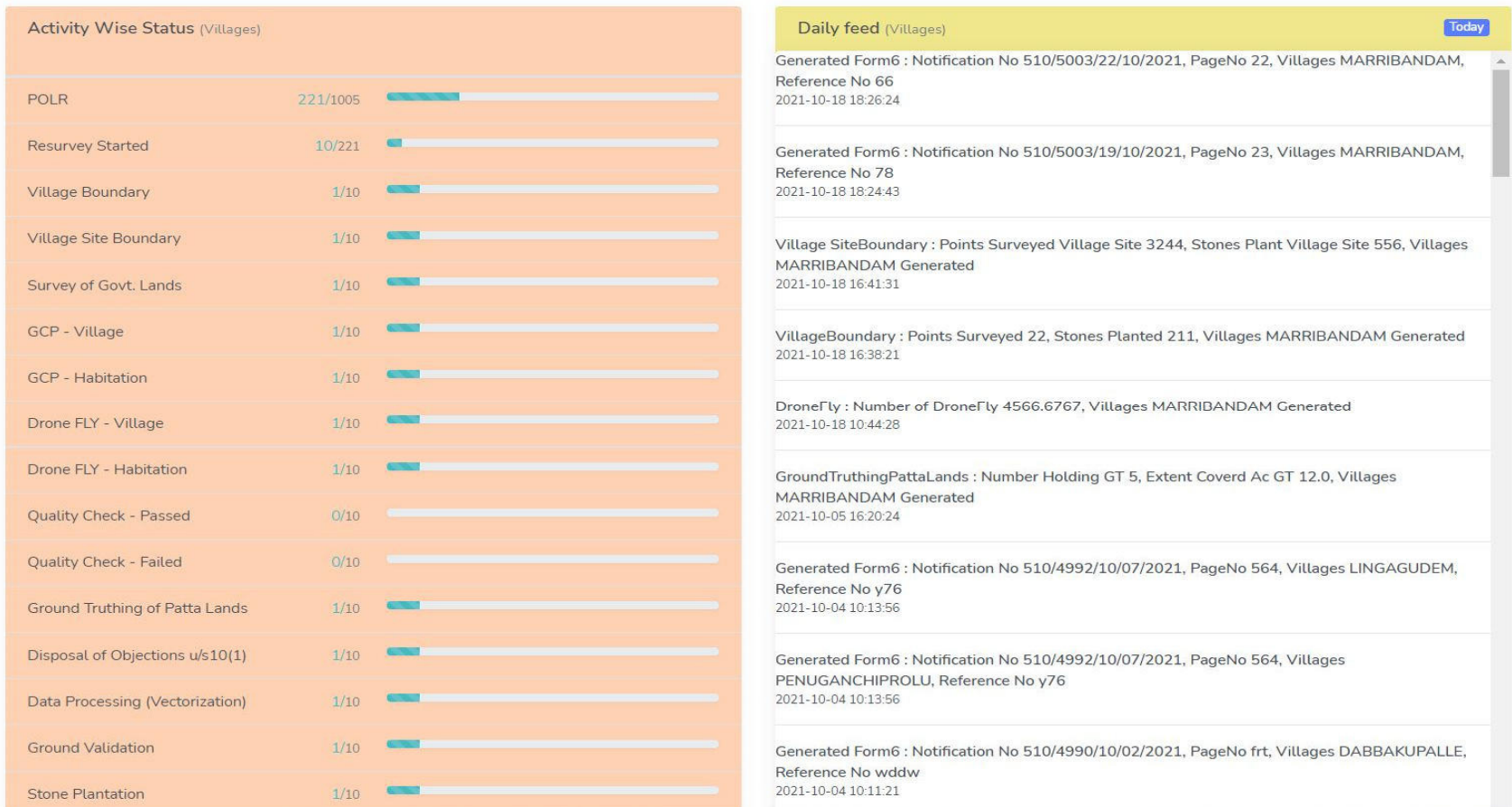


[www.geovista.in](http://www.geovista.in)

[contact@geovista.in](mailto:contact@geovista.in)



# Main Dashboard For Managerial Roles: Assistant Director contd..



## Main Dashboard For Managerial Roles: Assistant Director contd..

Disposal of Appeals u/s11	1/10	<div></div>
Publication of 13 Notification	0/10	<div></div>

Reference No wddw
2021-10-04 10:11:21
Load more

Survey Calendar (Villages)						
<div> <div>&lt;</div> <div>&gt;</div> <div>today</div> <div>October 2021</div> <div>month</div> <div>week</div> <div>day</div> </div>						
Sun	Mon	Tue	Wed	Thu	Fri	Sat
26	27	28	29	30	1	2
3	4	5	6	7	8	9
10	11	12	13	14	15	16
17	18	19	20	21	22	23
24	25	26	27	28	29	30
31	1	2	3	4	5	6

Engagements (Villages)	
+ Add	

# Mandals under Resurvey Started



**K SURYARAO**  
Assistant Director

Home

Notification 5

Notification 6

Data Inputs ▼

Work Status ▼

Work Process ▼

My Profile

Sign Out

## Mandals under ReSurvey Started

Search:

Sl No	Mandal Code	Mandal	District	Status
1	5005	AGIRIPALLE	Krishna	Started
2	5019	BANTUMILLI	Krishna	Started
3	5012	GANNAVARAM	Krishna	Started
4	5021	GUDIVADA	Krishna	Started
5	5029	GUDLAVALLERU	Krishna	Started
6	4991	JAGGAYYAPETA	Krishna	Started
7	5034	MACHILIPATNAM	Krishna	Started
8	5003	NUZVID	Krishna	Started
9	5030	PEDANA	Krishna	Started
10	5013	UNGUTURU	Krishna	Started





# Villages under Resurvey Started



**K SURYARAO**  
Assistant Director

Home

Notification 5

Notification 6

Data Inputs ▼

Work Status ▼

Work Process ▼

My Profile

Sign Out



Krishna  KRI-AD ▼ [Back](#) [Home](#)

## Villages under ReSurvey Started

Search:

Sl No	Village Code	Village	Mandal	District	Status
1	601008	SHER MOHAMMADPETA	JAGGAYYAPETA	Krishna.	Started
2	623025	MARRIBANDAM	NUZVID	Krishna.	Started
3	622003	MALLESWARAM	AGIRIPALLE	Krishna.	Started
4	621025	BUTHUMILLIPADU	GANNAVARAM	Krishna.	Started
5	627012	DIBBANAPUDI	UNGUTURU	Krishna.	Started
6	645011	KORLAPADU	BANTUMILLI	Krishna.	Started
7	642002	MERAKAGUDEM	GUDIVADA	Krishna.	Started
8	643011	VEMUGUNTA	GUDLAVALLERU	Krishna.	Started
9	644008	NELAKONDAPALLE	PEDANA	Krishna.	Started
10	637013	POTLAPALEM	MACHILIPATNAM	Krishna.	Started

[www.geovista.in](http://www.geovista.in)

[contact@geovista.in](mailto:contact@geovista.in)



# Data Input By Assistant Director



K SURYARAO

Assistant Director

Home

Notification 5

Notification 6

Data Inputs ▼

Work Status ▼

Work Process ▼

My Profile

Sign Out



Krishna



KRI-AD ▼

Back

Home

## Data Input by Assistant Director

### 1. Select Village

District

Krishna || కృష్ణా

Mandal

NUZVID || నూజివీడు

Village

MARRIBANDAM || మర్రిబందం

### 2. Date of Issue of 6-Notification

1st Publication

2nd Publication

Save

Sl No	1st Publication	2nd Publication
1	12/10/2021	14/10/2021

[www.geovista.in](http://www.geovista.in)

[contact@geovista.in](mailto:contact@geovista.in)



## Data Input By Assistant Director contd..



### 3. Collection of GCP

i Village

Date of Collection of GCPs		No.of Points Collected
<input type="text"/>	<input type="text"/>	<input type="text"/>

Save

St No	Date of Collection of GCPs	No.of Points Collected
<input type="text"/>	<input type="text"/>	<input type="text"/>

Date of Completion of GCPs Collection:

Save

ii Habitation

Date of Collection of GCPs		No.of Points Collected
<input type="text"/>	<input type="text"/>	<input type="text"/>

Save

St No	Date of Collection of GCPs	No.of Points Collected
<input type="text"/>	<input type="text"/>	<input type="text"/>

Date of Completion of GCPs Collection:

Save



## Data Input By Assistant Director contd..



### 4. Drone Fly

i Village

	Date of Drone Fly	Extent Covered Ac-Cts
	<input type="text"/>	<input type="text"/>

Save

Sl No	Date of Drone Fly	Extent Covered Ac-Cts
1	13/10/2021	4566.6767

Date of Completion of Drone Fly:

Save

ii Habitation

	Date of Drone Fly	No.of Habitations Covered
	<input type="text"/>	<input type="text"/>

Save

Sl No	Date of Drone Fly	No.of Habitations Covered
1	14/10/2021	4564

Date of Completion of Drone Fly:

Save



## Data Input By Assistant Director contd..



### 5. ORI Supplied

Date of Supply of ORI



Save

Sl No

Date of Supply of ORI

### 6. Date of Publication of 13 - Notification

Date of Publication of 13 - Notification



Save



# Detail Status Activity Wise



K SURYARAO

Assistant Director

Home

Notification 5

Notification 6

Data Inputs

Work Status

Work Process

My Profile

Sign Out



Krishna



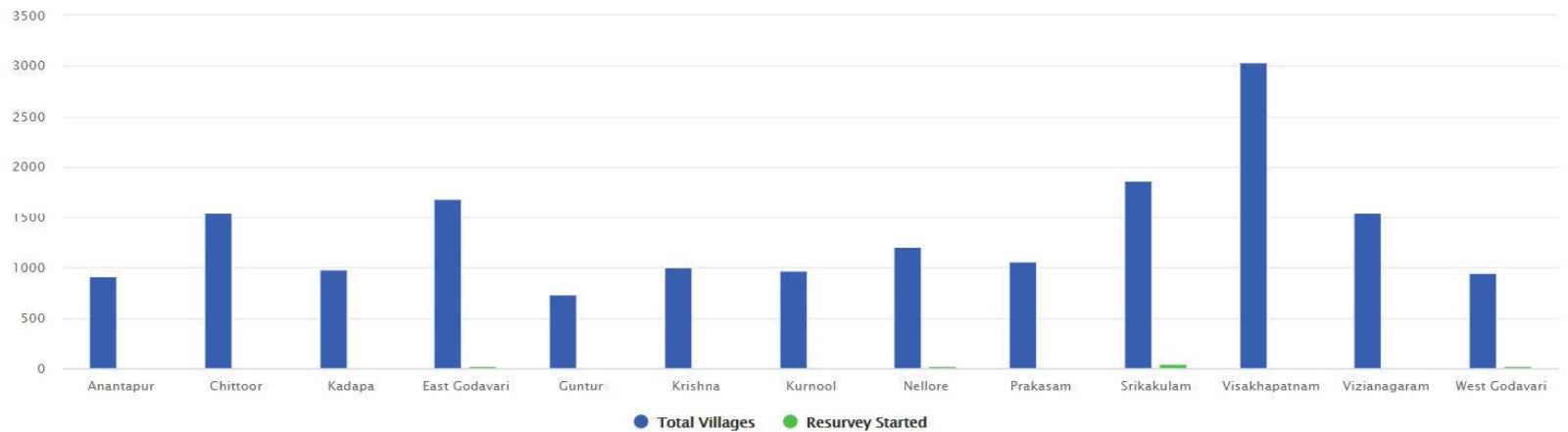
KRI-AD

Back

Home

Select Activity

Resurvey Started



## Detailed Status



					No.of Land						Survey		
--	--	--	--	--	------------	--	--	--	--	--	--------	--	--

[www.geovista.in](http://www.geovista.in)

[contact@geovista.in](mailto:contact@geovista.in)



## Detail Status District Wise



### Detailed Status



Sl.No	District	No.of Villages	Total Extent Ac-cts	No.of Old Sy.Nos	No.of Land holdings (As per Adangal)	POLR Finalized	Resurvey Started	Village Boundary	Village Site Boundary	Survey of Govt. Lands	GCPs		Drone FLY		Quality Check of ORI on Ground		Group Truth of Pa Lan
											Village	Habitation	Village	Habitation	Passed	Failed	
1	Anantapur	917	3137490.00	487761	850169	133	7	0	0	0	0	0	0	0	0	0	0
2	Chittoor	1545	2710171.00	553140	781659	24	13	0	0	0	0	0	0	0	0	0	0
3	Kadapa	981	2010338.80	539723	526755	119	11	0	0	0	0	0	0	0	0	0	0
4	East Godavari	1685	1804434.28	301626	857920	138	22	0	0	0	0	0	0	0	0	0	0
5	Guntur	727	2234200.94	401631	874307	91	16	0	0	0	0	0	0	0	0	0	0
6	Krishna	1005	2014326.80	315153	674018	221	10	1	1	1	1	1	1	1	0	0	1
7	Kurnool	964	4430901.33	451752	795647	80	10	0	0	0	0	0	0	0	0	0	0
8	Nellore	1201	2854392.59	412322	469337	48	24	0	0	0	0	0	0	0	0	0	0
9	Prakasam	1058	3293340.00	432660	761318	333	10	0	0	0	0	0	0	0	0	0	0
10	Srikakulam	1863	1231179.09	242283	674817	57	41	0	0	0	0	0	0	0	0	0	0

[www.geovista.in](http://www.geovista.in)

| [contact@geovista.in](mailto:contact@geovista.in)



## Detail Status Mandal Wise



### Detailed Status



District : Krishna																		
Sl.No	Mandal	No.of Villages	POLR Finalized	Resurvey Started	Village Boundary	Village Site Boundary	Survey of Govt. Lands	GCP's		Drone FLY		Quality Check of ORI on Ground		Ground Truthing of Patta Lands	Disposal of Objections u/s10(1)	Data Processing (Vectorization)	Ground Validation	Stone Plantation
								Village	Habitation	Village	Habitation	Passed	Failed					
1	VATSAVAI	26	25	0	0	0	0	0	0	0	0	0	0	0	0	0	0	0
2	JAGGAYYAPETA	25	16	1	0	0	0	0	0	0	0	0	0	0	0	0	0	0
3	PENUGANCHIPROLU	13	1	0	0	0	0	0	0	0	0	0	0	0	0	0	0	0
4	NANDIGAMA	26	2	0	0	0	0	0	0	0	0	0	0	0	0	0	0	0
5	VEERULLAPADU	26	15	0	0	0	0	0	0	0	0	0	0	0	0	0	0	0
6	MYLAVARAM	18	3	0	0	0	0	0	0	0	0	0	0	0	0	0	0	0
7	GAMPALAGUDEM	21	1	0	0	0	0	0	0	0	0	0	0	0	0	0	0	0
8	TIRUVURU	19	5	0	0	0	0	0	0	0	0	0	0	0	0	0	0	0
9	A KONDURU	13	1	0	0	0	0	0	0	0	0	0	0	0	0	0	0	0
10	REDDIGUDEM	11	1	0	0	0	0	0	0	0	0	0	0	0	0	0	0	0
11	VISSANNAPET	10	1	0	0	0	0	0	0	0	0	0	0	0	0	0	0	0

[www.geovista.in](http://www.geovista.in)

| [contact@geovista.in](mailto:contact@geovista.in)





# Detail Status Village Wise



## Detailed Status



District : Krishna, Mandal : NUZVID

SL.No	Village	POLR Finalized	Resurvey Started	Village Boundary	Village Site Boundary	Survey of Govt. Lands	GCP's		Drone FLY		Quality Check of ORI on Ground		Ground Truthing of Patta Lands	Disposal of Objections u/s10(1)	Data Processing (Vectorization)	Ground Validation	Stone Plantation	Service of 9(2) Notice
							Village	Habitation	Village	Habitation	Passed	Failed						
1	ANNAVARAM	0	0	0	0	0	0	0	0	0	0	0	0	0	0	0	0	0
2	BATHULAVARIGUDEM	0	0	0	0	0	0	0	0	0	0	0	0	0	0	0	0	0
3	BORAVANCHA	0	0	0	0	0	0	0	0	0	0	0	0	0	0	0	0	0
4	DEVARAGUNTA	0	0	0	0	0	0	0	0	0	0	0	0	0	0	0	0	0
5	DIGAVALLI	0	0	0	0	0	0	0	0	0	0	0	0	0	0	0	0	0
6	ENAMADALA	0	0	0	0	0	0	0	0	0	0	0	0	0	0	0	0	0
7	GOLLAPALLE	1	0	0	0	0	0	0	0	0	0	0	0	0	0	0	0	0
8	HANUMANTHUNIGUDEM	1	0	0	0	0	0	0	0	0	0	0	0	0	0	0	0	0
9	JANGAMGUDEM	1	0	0	0	0	0	0	0	0	0	0	0	0	0	0	0	0
10	MARRIBANDAM	1	1	1	1	1	1	1	1	1	0	0	1	1	0	1	1	1
11	MIRIJAPURAM	1	0	0	0	0	0	0	0	0	0	0	0	0	0	0	0	0
	MOKHASA																	

[www.geovista.in](http://www.geovista.in)

[contact@geovista.in](mailto:contact@geovista.in)



# Work Progress District Wise



## Work Progress



SLNo	District	No.of Villages	Total Extent Ac-cts	GCPs		Marking of GCPs		Drone Fly			Govt Lands Fixation		Ground Truthing		Objections u/s10(1)			Mandal Survey	
				No.of GCPs Collected on Village Boundary	No.of GCPs Collected on Habitation Boundary	No.of GCPs marking Completed on Village Boundary	No.of GCPs marking Completed on Habitation Boundary	No.of Villages Drone Fly Completed	Extent of the villages Drone fly Completed	No.of Habitations Drone Fly Completed	No. of Land Holdings	Extent in Acres	Notices Served	Land Parcels Marked on ORI	Received	Completed	Balance	No. of LPMs Inspected	
1	Anantapur	917	3137490.00	0	0	0	0	0	0.00	0	0	0.00	0	0	0	0	0	0	
2	Chittoor	1545	2710171.00	0	0	0	0	0	0.00	0	0	0.00	0	0	0	0	0	0	
3	East Godavari	1685	1804434.28	0	0	0	0	0	0.00	0	0	0.00	0	0	0	0	0	0	
4	Guntur	727	2234200.94	0	0	0	0	0	0.00	0	0	0.00	0	0	0	0	0	0	
5	Kadapa	981	2010338.80	0	0	0	0	0	0.00	0	0	0.00	0	0	0	0	0	0	
6	Krishna	1005	2014326.80	1	46	6	48	1	4605.6767	4570	263	43.67	37	11	12	13	14	0	
7	Kurnool	964	4430901.33	0	0	0	0	0	0.00	0	0	0.00	0	0	0	0	0	0	

[www.geovista.in](http://www.geovista.in)

[contact@geovista.in](mailto:contact@geovista.in)



# Work Progress Mandal Wise



## Work Progress



District : Krishna

SL.No	Mandal	No.of Villages	GCPs		Marking of GCPs		Drone Fly			Govt Lands Fixation		Ground Truthing		Objections u/s10(1)			Mandal Surveyor	
			No.of GCPs Collected on Village Boundary	No.of GCPs Collected on Habitation Boundary	No.of GCPs marking Completed on Village Boundary	No.of GCPs marking Completed on Habitation Boundary	No.of Villages Drone Fly Completed	Extent of the villages Drone fly Completed	No.of Habitations Drone Fly Completed	No. of Land Holdings	Extent in Acres	Notices Served	Land Parcels Marked on ORI	Received	Completed	Balance	No.of LPMs Inspected	No.of LPMs found Error
1	VATSAVAI	26	0	0	0	0	0	0.00	0	0	0.00	0	0	0	0	0	0	0
2	JAGGAYYAPETA	25	0	0	0	0	0	0.00	0	0	0.00	0	0	0	0	0	0	0
3	PENUGANCHIPROLU	13	0	0	0	0	0	0.00	0	0	0.00	0	0	0	0	0	0	0
4	NANDIGAMA	26	0	0	0	0	0	0.00	0	0	0.00	0	0	0	0	0	0	0
5	VEERULLAPADU	26	0	0	0	0	0	0.00	0	0	0.00	0	0	0	0	0	0	0
6	MYLAVARAM	18	0	0	0	0	0	0.00	0	0	0.00	0	0	0	0	0	0	0
7	CHITTOOR	21	0	0	0	0	0	0.00	0	0	0.00	0	0	0	0	0	0	0

[www.geovista.in](http://www.geovista.in)

| [contact@geovista.in](mailto:contact@geovista.in)



# Work Progress Village Wise



## Work Progress



District : Krishna, Mandal : NUZVID

SL.No	Village	GCPs		Marking of GCPs		Drone Fly			Govt Lands Fixation		Ground Truthing		Objections u/s10(1)			Field I		
		No.of GCPs Collected on Village Boundary	No.of GCPs Collected on Habitation Boundary	No.of GCPs marking Completed on Village Boundary	No.of GCPs marking Completed on Habitation Boundary	No.of Villages Drone Fly Completed	Extent of the villages Drone fly Completed	No.of Habitations Drone Fly Completed	No. of Land Holdings	Extent in Acres	Notices Served	Land Parcels Marked on ORI	Received	Completed	Balance	Mandal Surveyor		
																No.of LPMs Inspected	No.of LPMs found Error	No.c LPM Inspect
1	NARSUPET	0	0	0	0	0	0.00	0	0	0.00	0	0	0	0	0	0	0	0
2	DIGAVALLI	0	0	0	0	0	0.00	0	0	0.00	0	0	0	0	0	0	0	0
3	MUKKOLLUPADU	0	0	0	0	0	0.00	0	0	0.00	0	0	0	0	0	0	0	0
4	ANNAVARAM	0	0	0	0	0	0.00	0	0	0.00	0	0	0	0	0	0	0	0
5	HANUMANTHUNIGUDEM	0	0	0	0	0	0.00	0	0	0.00	0	0	0	0	0	0	0	0
6	VENKATAYAPALEM	0	0	0	0	0	0.00	0	0	0.00	0	0	0	0	0	0	0	0
7		0	0	0	0	0	0.00	0	0	0.00	0	0	0	0	0	0	0	0

[www.geovista.in](http://www.geovista.in)

| [contact@geovista.in](mailto:contact@geovista.in)



# Work Progress Village Wise



## Work Progress



District : Krishna, Mandal : NUZVID

SL.No	Village	GCPs		Marking of GCPs		Drone Fly			Govt Lands Fixation		Ground Truthing		Objections u/s10(1)			Field I		
		No.of GCPs Collected on Village Boundary	No.of GCPs Collected on Habitation Boundary	No.of GCPs marking Completed on Village Boundary	No.of GCPs marking Completed on Habitation Boundary	No.of Villages Drone Fly Completed	Extent of the villages Drone fly Completed	No.of Habitations Drone Fly Completed	No. of Land Holdings	Extent in Acres	Notices Served	Land Parcels Marked on ORI	Received	Completed	Balance	Mandal Surveyor		
																No.of LPMs Inspected	No.of LPMs found Error	No.c LPM Inspect
1	NARSUPET	0	0	0	0	0	0.00	0	0	0.00	0	0	0	0	0	0	0	0
2	DIGAVALLI	0	0	0	0	0	0.00	0	0	0.00	0	0	0	0	0	0	0	0
3	MUKKOLLUPADU	0	0	0	0	0	0.00	0	0	0.00	0	0	0	0	0	0	0	0
4	ANNAVARAM	0	0	0	0	0	0.00	0	0	0.00	0	0	0	0	0	0	0	0
5	HANUMANTHUNIGUDEM	0	0	0	0	0	0.00	0	0	0.00	0	0	0	0	0	0	0	0
6	VENKATAYAPALEM	0	0	0	0	0	0.00	0	0	0.00	0	0	0	0	0	0	0	0
7		0	0	0	0	0	0.00	0	0	0.00	0	0	0	0	0	0	0	0

[www.geovista.in](http://www.geovista.in)

| [contact@geovista.in](mailto:contact@geovista.in)



# Village Portal



K SURYARAO

Assistant Director

Home

Notification 5

Notification 6

Data Inputs

Work Status

Work Process

My Profile

Sign Out



Krishna  KRI-AD  Back  Home

## Village Portal

### Select Village to Start Resurvey Process

District

Mandal

Krishna || కృష్ణా

NUZVID || నూజివీడు

Load

Sl No	Village Code	Village Name	Current Status						Schedule Start Date	Schedule End Date	Date Modified	Actual End Date	Action
			Ground Truthing Notices	Objection	Ground Validation Notices	Notice9(2) Generation	Appeals	Notification13					
1	623001	నర్సిపేట	Not Started	Not Started	Not Started	Not Started	Not Started	Not Started					Not Available
2	623002	దిగవల్లి	Not Started	Not Started	Not Started	Not Started	Not Started	Not Started					Not Available
3	623003	ముక్కాల్లుపాడు	Not Started	Not Started	Not Started	Not Started	Not Started	Not Started					Not Available
4	623004	అన్నవరం	Not Started	Not Started	Not Started	Not Started	Not Started	Not Started					Not Available
5	623005	హనుమంతునిగూడెం	Not Started	Not Started	Not Started	Not Started	Not Started	Not Started					<a href="#">Start Resurvey</a>

[www.geovista.in](http://www.geovista.in)

[contact@geovista.in](mailto:contact@geovista.in)



## Village Portal contd..



16	623016	రామన్నగూడెం	Not Started	Not Started	Not Started	Not Started	Not Started	Not Started	Not Started	Not Available
17	623017	పొలసనపల్లె	Not Started	Not Started	Not Started	Not Started	Not Started	Not Started	Not Started	<a href="#">Start Resurvey</a>
18	623018	మోర్నపూడి	Not Started	Not Started	Not Started	Not Started	Not Started	Not Started	Not Started	<a href="#">Start Resurvey</a>
19	623019	దేవరగుంట	Not Started	Not Started	Not Started	Not Started	Not Started	Not Started	Not Started	Not Available
20	623020	వేంపాడు	Not Started	Not Started	Not Started	Not Started	Not Started	Not Started	Not Started	Not Available
21	623021	గొల్లపాలెం	Not Started	Not Started	Not Started	Not Started	Not Started	Not Started	Not Started	<a href="#">Start Resurvey</a>
22	623022	మిరిజాపురం	Not Started	Not Started	Not Started	Not Started	Not Started	Not Started	Not Started	<a href="#">Start Resurvey</a>
23	623023	మోక్ష నరసన్నపాలెం	Not Started	Not Started	Not Started	Not Started	Not Started	Not Started	Not Started	<a href="#">Start Resurvey</a>
24	623024	పల్లెర్లమూడి	Not Started	Not Started	Not Started	Not Started	Not Started	Not Started	Not Started	Not Available
25	623025	మర్రిబండం	Completed	Started	Started	Not Started	Started	Not Started	04/10/2021 05/05/2022	<a href="#">Go To Portal</a>
26	623026	సీతారాంపురం	Not Started	Not Started	Not Started	Not Started	Not Started	Not Started	Not Started	<a href="#">Start Resurvey</a>

[www.geovista.in](http://www.geovista.in)

[contact@geovista.in](mailto:contact@geovista.in)





# Village Portal Overview



K SURYARAO

Assistant Director

Home

Notification 5

Notification 6

Data Inputs

Work Status

Work Process

My Profile

Sign Out



Krishna



KRI-AD

Back

Home

## Village Portal

Selected Village:

MARRIBANDAM/NUZVID/Krishna

Status **Ready To Start**

Schedule Start Date  
10/4/2021 10:55:00 AM

Schedule End Date  
5/5/2022 10:55:00 AM

Actual End Date

No. Of Days

Overview

Personnel

Processes

Records

Audit History

### Overview

#### Stats

11914

Ground Truthing

Ground  
Validation

Objections

Appeals

#### Activity Feed

- Ground Truthing: Form 15 - Notice Date 8/06/2021, Notice Time 9:00 AM
- Ground Truthing: Form 14 - Notice Date 10/06/2021, Notice Time 9:00 AM
- Ground Truthing: Form 14 - Notice Date 10/06/2021, Notice Time 9:00 AM
- Ground Truthing: Form 14 - Notice Date 10/06/2021, Notice Time 9:00 AM
- Ground Truthing: Form 14 - Notice Date 10/06/2021, Notice Time 9:00 AM
- Ground Truthing: Form 14 - Notice Date 10/06/2021, Notice Time 9:00 AM
- Ground Truthing: Form 14 - Notice Date 10/06/2021, Notice Time 9:00 AM
- Ground Truthing: Form 14 - Notice Date 10/06/2021, Notice Time 9:00 AM

#### Action Items

- Add Village,Khandam,Parcel Assigned To Soni Dondapati
- Ground Truthing Notices Assigned To Soni Dondapati
- Inspection(QC) by DIOS
- Inspection(QC) by IOS
- Inspection(QC) by MS Assigned To RavindranathKumar B
- Inspection(QC) LP Data by MS Assigned To RavindranathKumar B
- Objections Assigned To Soni Dondapati
- Objections\_DA
- Appeals

Village map/Progress chart

[www.geovista.in](http://www.geovista.in)

[contact@geovista.in](mailto:contact@geovista.in)





# Village Portal Personnel



K SURYARAO

Assistant Director

Home

Notification 5

Notification 6

Data Inputs

Work Status

Work Process

My Profile

Sign Out



Krishna



KRI-AD

Back

Home

## Village Portal

Selected Village:

MARRIBANDAM/NUZVID/Krishna

Status **Ready To Start**

Schedule Start Date  
10/4/2021 10:55:00 AM

Schedule End Date  
5/5/2022 10:55:00 AM

Actual End Date

No. Of Days

Overview **Personnel** Processes Records Audit History

### Personnel

Name	Role	CreatedBy	Created Date	Documnet
SuryaRao K	Director		4/19/2021 4:31:44 PM	<a href="#">Edit</a>
SuryaRao K	Asst Director		4/19/2021 4:31:44 PM	<a href="#">Edit</a>
SuryaRao K	Village Surveyor		4/19/2021 4:31:44 PM	<a href="#">View</a> <a href="#">Edit</a>
SuryaRao K	Surveyor		4/19/2021 4:31:44 PM	<a href="#">View</a> <a href="#">Edit</a>

Version 2.1

Powered by: **GEOVISTA**

[www.geovista.in](http://www.geovista.in)

[contact@geovista.in](mailto:contact@geovista.in)



# Village Portal Processes



Notification 5

Notification 6

Data Inputs

Work Status

Work Process

My Profile

Sign Out

Overview

Personnel

Processes

Records

Audit History

## Processes

Sl No	Process	Status	AssignedTo	Created Date	Modified Date	Completed Date
1	Ground Truthing Notices	Started	Soni Dondapati	24/04/2021	28/09/2021	--
2	Add Village,Khandam,Parcel	Started	Soni Dondapati	18/10/2021	18/10/2021	--
3	Inspection(QC) by MS	Not Started	RavindranathKumar B			--
4	Inspection(QC) by DIOS	Not Started				--
5	Inspection(QC) by IOS	Not Started				--
6	Objections_DA	Not Started				--
7	Objections	Not Started	Soni Dondapati			--
8	Inspection(QC) LP Data by MS	Not Started	RavindranathKumar B			--
9	Inspection(QC) LP Data by DIOS	Not Started				--
10	Inspection(QC) LP Data by IOS	Not Started				--
11	Field Register, LPM PDF,Village Map	Not Started	Soni Dondapati			--
12	Ground Validation Notices	Not Started	Soni Dondapati			--
13	Inspection(QC) GV by MS	Not Started				--
14	Inspection(QC) GV by DIOS	Not Started				--

[www.geovista.in](http://www.geovista.in)

[contact@geovista.in](mailto:contact@geovista.in)



# Village Portal Records



K SURYARAO

Assistant Director

Home

Notification 5

Notification 6

Data Inputs

Work Status

Work Process

My Profile

Sign Out



Krishna



KRI-AD

Back

Home

## Village Portal

Selected Village:

MARRIBANDAM/NUZVID/Krishna

Status **Ready To Start**

Schedule Start Date  
10/4/2021 10:55:00 AM

Schedule End Date  
5/5/2022 10:55:00 AM

Actual End Date

No. Of Days

Overview Personnel Processes **Records** Audit History

### Records

Show 10 entries

Search:

Name	CreatedBy	Created Date
ScheduleDate	AD KRISHNAA	10/4/2021 10:55:00 AM

Showing 1 to 1 of 1 entries

Previous 1 Next

Version 2.1

Powered by: **GEOVISTA**

[www.geovista.in](http://www.geovista.in)

[contact@geovista.in](mailto:contact@geovista.in)



# Village Portal Audit History



K SURYARAO

Assistant Director

Home

Notification 5

Notification 6

Data Inputs

Work Status

Work Process

My Profile

Sign Out



Krishna  KRI-AD  Back  Home

## Village Portal

Selected Village:

MARRIBANDAM/NUZVID/Krishna

Status **Ready To Start**

Schedule Start Date  
10/4/2021 10:55:00 AM

Schedule End Date  
5/5/2022 10:55:00 AM

Actual End Date No. Of Days

Overview Personnel Processes Records **Audit History**

### AuditLog

Show 10 entries

Search:

Date & Time	Status	Description	Initiated By
19/01/2021 10:15 AM	New	Changed to In Progress	AdKrishna
20/01/2021 10:15 AM	In Progress	Changed to Village Notification	Kalyan
25/01/2021 10:15 AM	Village Notification	Changed to Truthing	Kalyan
30/01/2021 10:15 AM	Truthing	Changed to Objection	Kalyan

Showing 1 to 4 of 4 entries

Previous 1 Next

Version 2.1

Powered by: **GEOVISTA**

[www.geovista.in](http://www.geovista.in)

[contact@geovista.in](mailto:contact@geovista.in)



# Village Portal Audit History



K SURYARAO

Assistant Director

Home

Notification 5

Notification 6

Data Inputs

Work Status

Work Process

My Profile

Sign Out



Krishna  KRI-AD  Back  Home

## Village Portal

Selected Village:

MARRIBANDAM/NUZVID/Krishna

Status **Ready To Start**

Schedule Start Date  
10/4/2021 10:55:00 AM

Schedule End Date  
5/5/2022 10:55:00 AM

Actual End Date No. Of Days

Overview Personnel Processes Records **Audit History**

### AuditLog

Show 10 entries

Search:

Date & Time	Status	Description	Initiated By
19/01/2021 10:15 AM	New	Changed to In Progress	AdKrishna
20/01/2021 10:15 AM	In Progress	Changed to Village Notification	Kalyan
25/01/2021 10:15 AM	Village Notification	Changed to Truthing	Kalyan
30/01/2021 10:15 AM	Truthing	Changed to Objection	Kalyan

Showing 1 to 4 of 4 entries

Previous 1 Next

Version 2.1

Powered by: **GEOVISTA**

[www.geovista.in](http://www.geovista.in)

[contact@geovista.in](mailto:contact@geovista.in)



# Data Input By Village Surveyor



## Village Surveyor

Village Surveyor

Home

Notification 5

Notification 6

Data Inputs

Work Status

Work Process

My Profile

Sign Out



Krishna/NUZVID/MARRIBANDAM



vs623025

Back

Home

## DATA INPUT BY VILLAGE SURVEYOR

### 1. Select Village

District

Krishna || కృష్ణా

Mandal

NUZVID || నూజివీడు

Village

MARRIBANDAM || మర్రిబందం

i. No. of land holdings as per Web land Adangal:

224

ii. No. of Survey numbers:

221

Extent:

22

Ares.

Extent:

8.903278025091057

Hect.

iii. Date of Receipt of PoLR in Form - 6a:

17/10/2021

iv. Date of Receipt of ORI:

14/10/2021

### 2. Survey of Village Boundary :

i

Date	No. of points surveyed	No. of Stones planted	fill in Form-8A
<input type="text"/>	<input type="text"/>	<input type="text"/>	<input type="text"/>

Save

[www.geovista.in](http://www.geovista.in)

[contact@geovista.in](mailto:contact@geovista.in)



## Data Input By Village Surveyor contd..



Sign Out

### 2. Survey of Village Boundary :

Date	No. of points surveyed	No. of Stones planted	fill in Form-8A
<input type="text"/>	<input type="text"/>	<input type="text"/>	<input type="text" value="Form 8A"/>

Save

Sl No	Date	No. of points surveyed	No. of Stones planted
1	12/10/2021	22	211

ii Date of Completion of Village Boundary: 18/10/2021

### 3. Survey of Village Site Boundary

Date	No. of points surveyed	No. of Stones planted	fill in Form-8B
<input type="text"/>	<input type="text"/>	<input type="text"/>	<input type="text" value="Form 8B"/>

Save

Sl No	Date	No. of points surveyed	No. of Stones planted
1	08/10/2021	3244	556

ii Date of Completion of Village Site Boundary:

Save

[www.geovista.in](http://www.geovista.in)

[contact@geovista.in](mailto:contact@geovista.in)



## Data Input By Village Surveyor contd..



### 4. Survey of Govt. lands

i Total Sy.Nos/Sd Nos of Govt. Lands:

ii Total Extent of Govt. Lands

iii

Date	No.of Land holdings Surveyed	Extent covered Ac. Cts.
<input type="text"/>	<input type="text"/>	<input type="text"/>

Save

Sl No	Date	No.of Land holdings Surveyed	Extent covered Ac. Cts.
-------	------	------------------------------	-------------------------

iv Date of Completion of Govt.Lands:

Save

### 5. Marking of GCPs ( Jungle Clearence/ Chunna Marking)

i Village

Date	No.of GCPs Completed
<input type="text"/>	<input type="text"/>

Save

Sl No	Date	No.of GCPs Completed
-------	------	----------------------

Date of Completion of Marking GCPs:

[www.geovista.in](http://www.geovista.in)

[contact@geovista.in](mailto:contact@geovista.in)





## Data Input By Village Surveyor contd..



### 6. Quality Check of ORI

#### i GCP Lab Check

Date of completion	Wether ORI is feasible or not for Ground Truthing		fill in Form-10
	Yes	No	
	<input type="radio"/>	<input type="radio"/>	<a href="#">Form 10</a>

Save

#### ii ORI Ground Check

Date of ORI Supplied by Sol	Date of GCPs Ground Checking	No.of GCPs Checked	No.of Points Talied	fill in Form-13
				<a href="#">Form 13</a>

Save

#### iii Result of ORI Ground Check

Date of completion	Wether ORI is feasible or not	
	Yes	No
13/10/2021	<input checked="" type="radio"/>	<input type="radio"/>

### 7. Ground Truthing

#### i Date of Commencement of Ground Truthing:

Save

#### ii Notices ( Form-14,15) Served upon individual

Date	No. of land holdings	Extent covered Ac. Cts.

Save

[www.geovista.in](http://www.geovista.in)

[contact@geovista.in](mailto:contact@geovista.in)



## Data Input By Village Surveyor contd..



### 8. Objection u/s 10(1) during Ground Truthing

i			
Date	No. of applications Received	No. of applications Disposed	No. of applications Pending
<input type="text"/>	<input type="text"/>	<input type="text"/>	<input type="text"/>

Save

Sl No	Date	No. of applications Received	No. of applications Disposed	No. of applications Pending

ii Date of Completion of Objections:

Save

### 9. Data Processing in GIS Software

i		
Date	No. of Land Parcels Extracted in ORI	Extent covered Ac. Cts.
<input type="text"/>	<input type="text"/>	<input type="text"/>

Save

Sl No	Date	No. of Land Parcels Extracted in ORI	Extent covered Ac. Cts.

ii Date of Completion of Data Process:

Save

[www.geovista.in](http://www.geovista.in)

[contact@geovista.in](mailto:contact@geovista.in)



## Data Input By Village Surveyor contd..

### 10. Ground Validation

i Notices ( Form-33A,33B, 34) Served upon individual

Date	No. of Land Parcels	Extent covered Ac. Cts.
<input type="text"/>	<input type="text"/>	<input type="text"/>

Save

Sl No	Date	No. of Land Parcels	Extent covered Ac. Cts.
-------	------	---------------------	-------------------------

ii Corrections on ORI

Date	No.of LPMs Corrected	No. of LPMs Ground Validation completed	Extent covered Ac. Cts.
<input type="text"/>	<input type="text"/>	<input type="text"/>	<input type="text"/>

Save

Sl No	Date	No.of LPMs Corrected	No. of LPMs Ground Validation completed	Extent covered Ac. Cts.
-------	------	----------------------	---	-------------------------

iii Missing/Additional data Collection

Date	No.of Points	fill in Form-35	fill in Form-36
<input type="text"/>	<input type="text"/>	<a href="#">Form 35</a>	<a href="#">Form 36</a>

Save

Sl No	Date	No.of Points
-------	------	--------------

iv Date of Completion of Ground Validation:

Save

## Data Input By Village Surveyor contd..



### 11. Stone Plantation

i

Date	No.of stones Required	No. of stones Received	No. of stones planted	No. of stones to be planted
<input type="text"/>	<input type="text"/>	<input type="text"/>	<input type="text"/>	<input type="text"/>

Save

Sl No	Date	No.of stones Required	No. of stones Received	No. of stones planted	No. of stones to be planted
-------	------	-----------------------	------------------------	-----------------------	-----------------------------

ii Date of Completion of Stone plantation:

Save

iii Stone Plantation Man Power:

Date	No.of person Deployed
<input type="text"/>	<input type="text"/>

Save

Sl No	Date	No.of person Deployed
-------	------	-----------------------



## Data Input By Village Surveyor contd..

### 12. Status of 9(2) Notices

i Total No.of LPMs:

ii Total No.of Landholders:

iii Status:

Date	No.of Notices Served upon	Balance
<input type="text"/>	<input type="text"/>	<input type="text"/>

Save

Sl No	Date	No.of Notices Served upon individual	Balance
-------	------	--------------------------------------	---------

iv Date of Completion of Serving Notices:

Save

### 13. Appeal u/s 11 against 9(2)/10(2) orders

Date	No.of Appels Received
<input type="text"/>	<input type="text"/>

Save

Sl No	Date	No.of Appels Received
-------	------	-----------------------

# Village Boundary



Work Status

Work Process

My Profile

Sign Out

Upload your Village Boundary

Choose File

Villageboundary.geojson

Upload



[www.geovista.in](http://www.geovista.in)

[contact@geovista.in](mailto:contact@geovista.in)





# Khandam Boundary



Extent in AC.

1.1660

Extent in He.

[www.geovista.in](http://www.geovista.in)

[contact@geovista.in](mailto:contact@geovista.in)



# Parcel Upload Video



Browser address bar: apcors-qa.azurewebsites.net/App/Parcel

Navigation bar: krishna/jaggayyapeta/thakkellapadu | kalyan | Back | Home

Left sidebar (User: kalyan, Village Surveyor):

- Statutory Notices
- Allotted Work
- Generate Notices
- Objections u/s 10(1)
- Field Data Process
- Village Map
- Web GIS
- My Profile
- Logout
- Help

Main content area:

Parcel Survey | Parcel List

Select Khandam

Select Khandam [Khandam4]

Upload Parcel Map

Upload your parcel map [Choose File] No file chosen [Upload]

1. Objections

Has Objection?

Objection Details

Nature of ownership

Activate Windows  
Go to Settings to activate Windows.

[www.geovista.in](http://www.geovista.in)

[contact@geovista.in](mailto:contact@geovista.in)





# Parcel Upload



Data Inputs

Work Status

Work Process

My Profile

Sign Out

## Select Khandam

Select Khandam --Selected--

## Upload Parcel Map

Upload your parcel map

Choose File 55.geojson

Upload



[www.geovista.in](http://www.geovista.in)

| [contact@geovista.in](mailto:contact@geovista.in)



## Parcel Upload contd..



### 1. Objections

Has Objection?

No

Objection Details

Nature of ownership

Private Land

### 2. Re Survey

Land Parcel Chalta No.

12345678

Extent in AC.

0.6750

Extent in He.

0.2732

[www.geovista.in](http://www.geovista.in)

| [contact@geovista.in](mailto:contact@geovista.in)



## Parcel Upload contd..



### 3. Adangal Data Review

Sy. No.

Please Search Your SurveyNumber.....

1-4B||దాసరి వెంకటలక్ష్మి

Total extent as per RSR/SFA in Ac.cts

1.4800

Extent as per ROR/Adangal Ac. Cts

1.4800

Nature of Classification Govt.Dry/ Govt. Wet/ Govt. Poramboke

పట్టా

Name of Pattadar and Son/Wife of

దాసరి వెంకటలక్ష్మి

Khata No.

198

Nature of Enjoyment Purchase/ Succession/ Assigned/ Ceiling/ Acquisition/ Alienation

Succession

Remove

Add Another Survey

[www.geovista.in](http://www.geovista.in)

[contact@geovista.in](mailto:contact@geovista.in)



## Parcel Upload contd..



### 4. As Per Resurvey

Correlation Sy.Nos./ Sub division

453

Category

Private

Classification

Wet

Source of Irrigation

Tank

Evidence for acquiring Rights

Registration Deed No.

Nature of Land use

Agriculture

Types of CROP

Paddy



## Parcel Upload contd..



### Details of Pattadar

Remarks on Pattadar

Occupier is a successor of Pattadar in Adanqal

Name/Department/Institutional

ravi

Father's / Mother's / Husband's Name of Pattadar

shankar

Name of the Lawful Enjoyer - If Pattadar name as per RoR differed with lawful enjoyer( to be enquired by Revenue Dept.)

Father's / Mother's / Husband's Name of Lawful Enjoyer

Remarks

remarks



## Parcel Upload contd..



### 5. Personal Details

Aadhar No.

123456789012

Mobile No.

9876543210

email

admin@gmail.com

Present Address for communication

Krishna

### 6. S&B Act Statutory Work

Whether individual notice received or Not

No

Name & Signature of the Lawful Enjoyer/Authorised Agent attended for survey attendee\_type

Authorised Agent

Other details

[www.geovista.in](http://www.geovista.in)

| [contact@geovista.in](mailto:contact@geovista.in)



# Parcel Upload contd..



## 7. Generate Field Register

[Preview Field register](#) [Print Field register](#)

### Field Register

Resurvey				AS PER ROR/ADANGAL						
Sl.No.	Land Parcel No	Extent		Sy. No.	Total extent as per RSR/SFA. in Ac.cts	Extent as per ROR/Adangal Ac. Cts	Nature of Classification Govt.Dry/ Govt. Wet/ Govt. Poramboke	Name of Pattadar and Son/Wife of	Khata No.	Nature of Enjoyment Purchase/ Succession/ Assigned/ Ceiling/ Acquisition/ Alienation
1	2	3A	3B	4	5	6	7	8	9	10
1	12345678	0.6750	0.2732	1-4B	1.4800	1.4800	పట్టా	దాసరి వెంకటలక్ష్మి	198	Succession

#### AS PER RESURVEY

				Details of Pattadar								
Correlation Sy.Nos./ Sub division	Category	Classification	Source of Irrigation	Khata No.	Pattadaru Name	Father's / Mother's / Husband's Name of Pattadar	Name of the Lawful Enjoyer if Pattadar name as per RoR differed with lawful enjoyer( to be enquired by Revenue Dept.)	Father's / Mother's / Husband's Name of Lawful Enjoyer	Evidence for acquiring Rights	Nature of Land use	Types of Crop	Remarks on (Cols. 11 to 14)
11	12	13	14	15A	15B	15C	15D	15E	16	17	18	19
453	Private	Wet	Tank		ravi	shankar			Registration Deed No.	Agriculture	Paddy	remarks

#### PERSONAL DETAILS

Aadhar No.	Mobile No.	Email Id	Present Address for communication
20	21	22	23
123456789012	9876543210	admin@gmail.com	Krishna

#### S&B ACT STATUTORY WORK

[www.geovista.in](http://www.geovista.in)

[contact@geovista.in](mailto:contact@geovista.in)





## Parcel Upload contd..



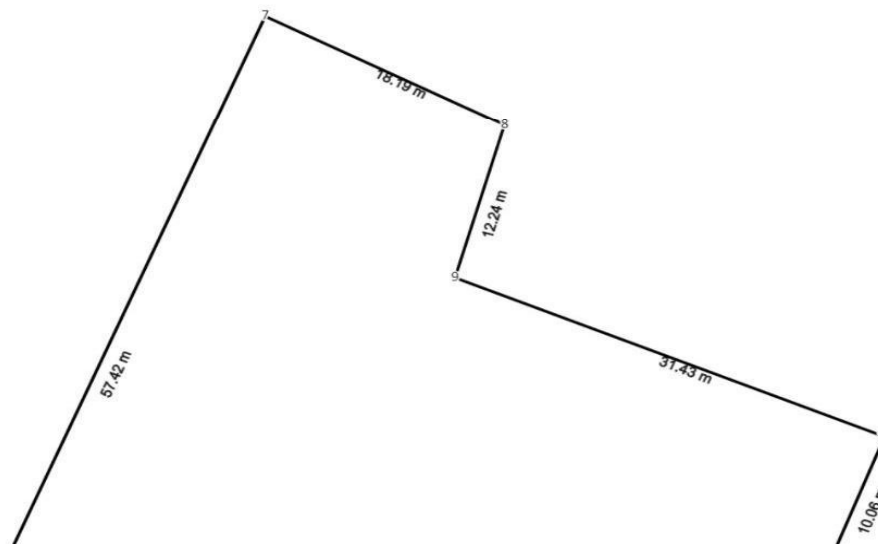
S&B ACT STATUTORY WORK			
Whether individual notice received or Not	Name & Signature of the Lawful Enjoyer/Authorised Agent attended for survey	Other details	REMARKS
24	25	26	27
No	Authorised Agent	Other	remarks

District : Krishna  
Mandal : NUZVID  
Village : MARRIBANDAM

Land Parcel Map (draft)

Land Chalta no : 12345678  
Area : 0.6750 AC  
Scale : 1:1000

Date & Time Of Survey :

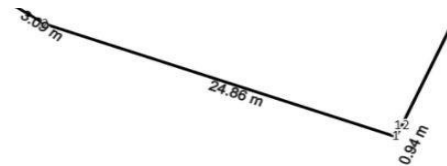


[www.geovista.in](http://www.geovista.in)

| [contact@geovista.in](mailto:contact@geovista.in)



## Parcel Upload contd..



Sl No	Point X	Point Y
1	494119.8250	1844522.0490
2	494096.4670	1844530.5610
3	494093.9210	1844532.3110
4	494089.8040	1844540.2380
5	494086.2080	1844543.5830
6	494075.9470	1844548.1870
7	494098.0370	1844601.1910
8	494114.1890	1844592.8320
9	494110.8390	1844581.0610
10	494139.7990	1844568.8490
11	494136.1610	1844559.4680
12	494120.2300	1844522.8930
13	494119.8250	1844522.0490

[Save](#)
[Submit Final](#)